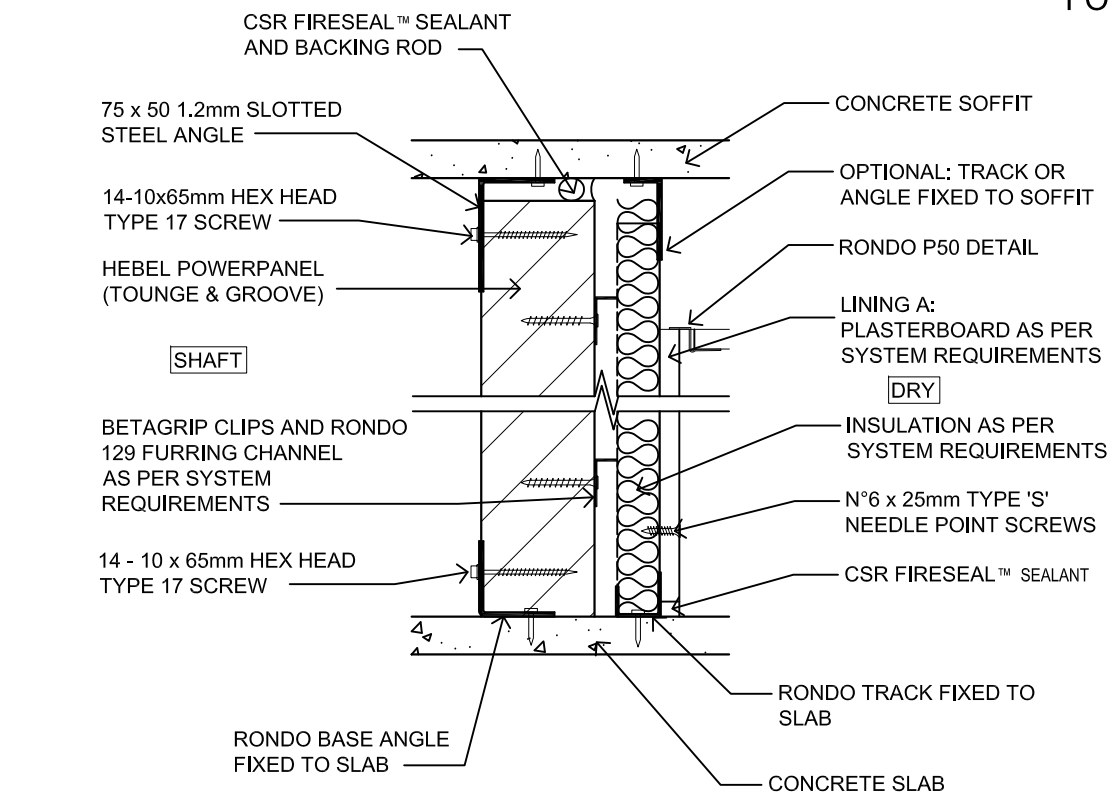
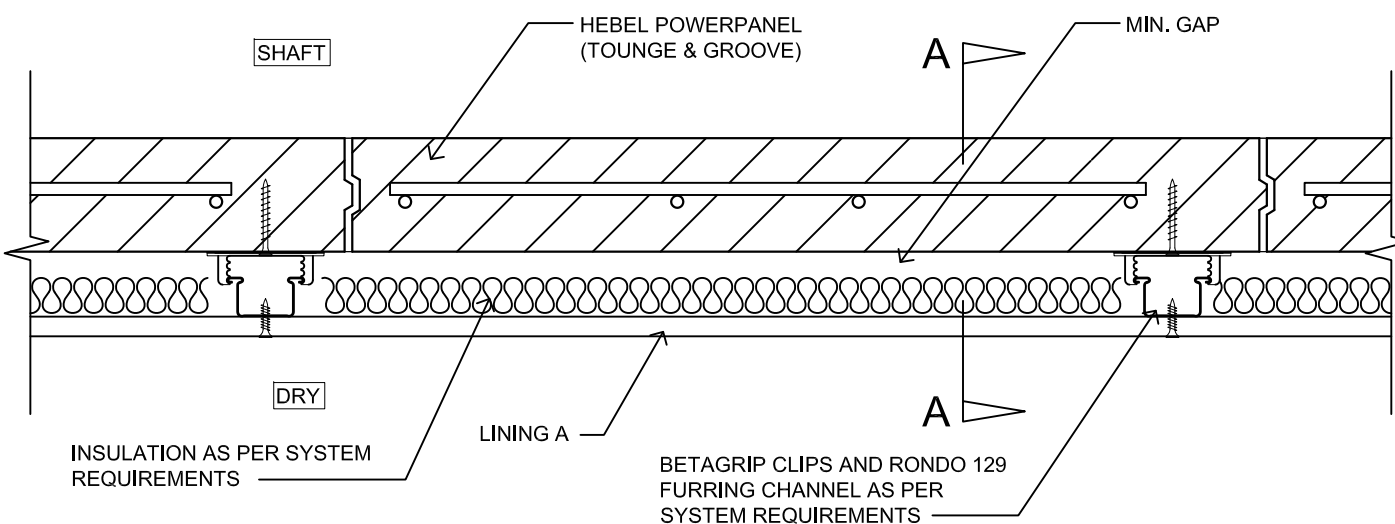


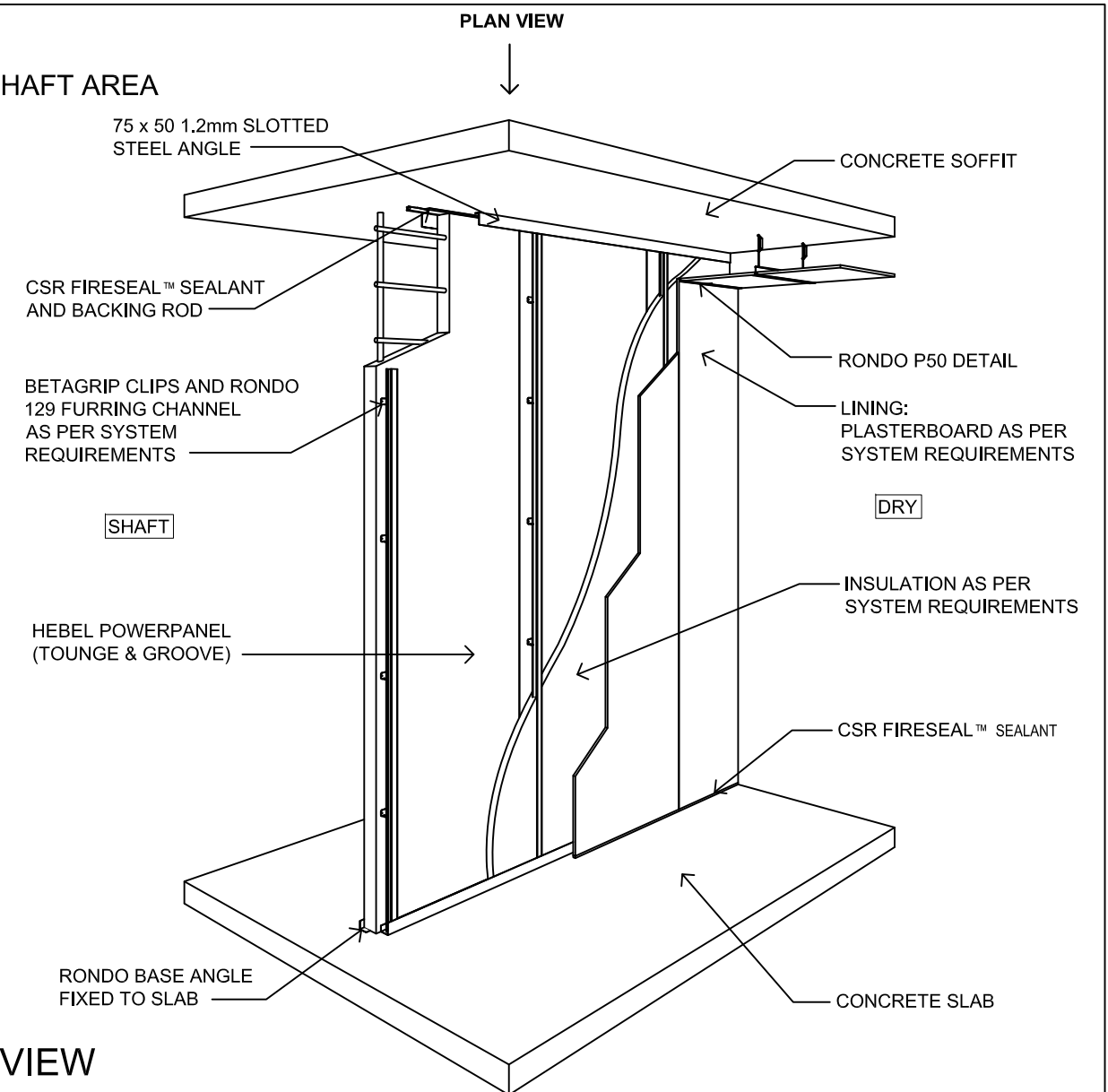
# HEBEL SHAFT WALLS FOR GENERAL PARTITIONS ON SERVICE SHAFT AREA TO DRY HABITABLE ROOMS HEB 1208 - 1210



VERTICAL CROSS SECTION DETAIL A-A



DETAIL PLAN VIEW



ISOMETRIC VIEW

NTS

SHAFT WALL								
CODE	APPLICATION	WALL THICKNESS	WALL HEIGHT 'H'	FRL <sup>(B)</sup>	R <sub>w</sub> +C <sub>tr</sub> <sup>(B)</sup>	SYSTEM COMPONENT VARIATIONS		
						MIN. GAP	INSULATION <sup>(A)</sup>	LINING A
HEB1208	SHAFT TO DRY	131mm	UP TO 3.3m HIGH	-/90/90 FOR WALL HEIGHTS UP TO 3.3m	40dB	43mm	50mm GLASSWOOL	13mm GYPROCK CD
HEB1209	SHAFT TO DRY	131mm	UP TO 3.3m HIGH	-/90/90 FOR WALL HEIGHTS UP TO 3.3m	40dB	43mm	50mm POLYESTER	13mm GYPROCK CD
HEB1210	SHAFT TO WET	116mm	UP TO 3.3m HIGH	-/90/90 FOR WALL HEIGHTS UP TO 3.3m	33dB	28mm	NIL	13mm AQUACHEK

REFER TO DESIGN AND INSTALLATION GUIDES FOR HIGH RISE INTERTENANCY AND SERVICE WALLS (HEB 1354) FOR MORE CONSTRUCTION AND PRODUCT INFORMATION.  
FOR WALLS > 3.3m AND ≤ 4.65m, POWERPANEL SP CAN BE USED AND WILL ACHIEVE A FRL OF -/120/120. REFER TO DESIGN AND INSTALLATION GUIDES FOR SHAFT AND SCISSOR STAIR WALLS (HEBIT 032) FOR MORE DETAILED INFORMATION.  
DETAILED INFORMATION, INSULATION DENSITIES ARE 11kg/m<sup>3</sup> FOR GLASSWOOL AND 14kg/m<sup>3</sup> FOR POLYESTER



**CSR BUILDING PRODUCTS LTD**  
Head Office: T1111 3, 39 DELHI RD, NORTH RYDE NSW 2113  
LOCKED BAG 1345, NORTH RYDE BC NSW 1670  
A.B.N. 55 008 631 356 P12: 1300 369 448  
www.hebelaustralia.com.au



SYSTEM CODE		TITLE			
HEB1208 - 1210		HEBEL SHAFT WALLS			
SCALE	SHEET NO.	SHEET SIZE	DRAWN	CHECK	DATE
1:5 @ A3	1 of 1	A3	DG	CW	28.04.15
DESIGN GUIDE REFERENCE		REVISION			
---		A			