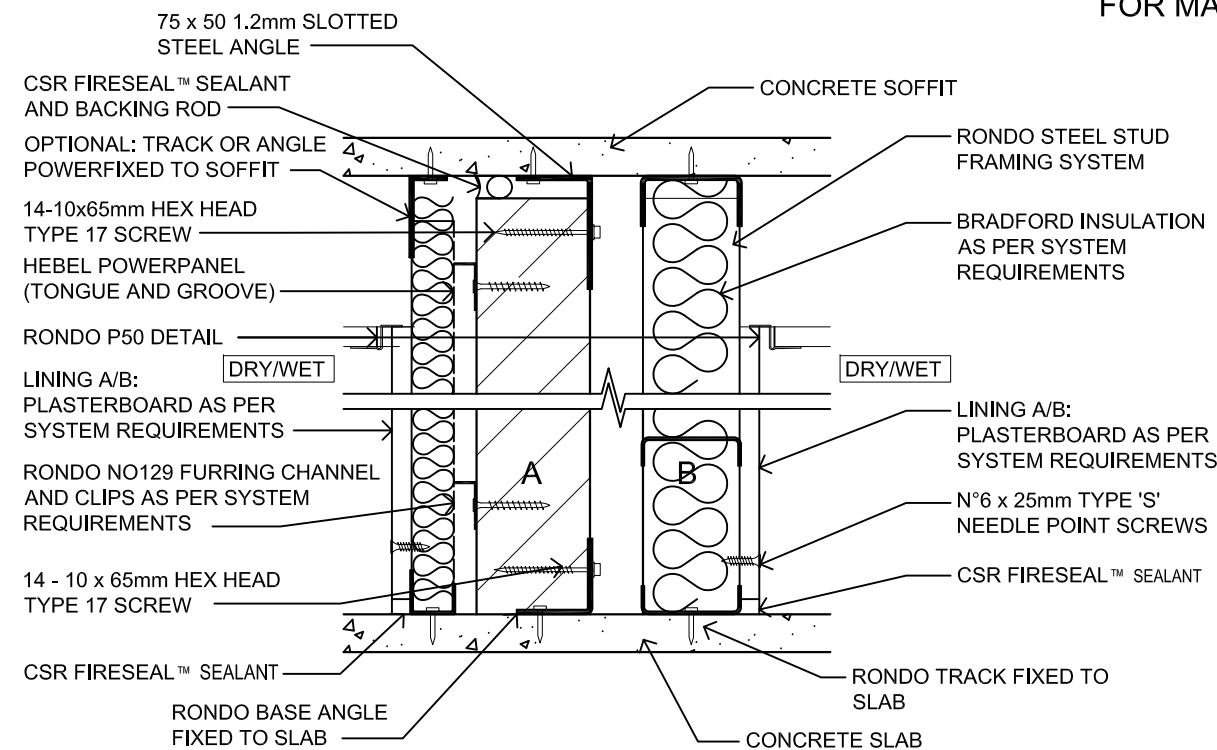
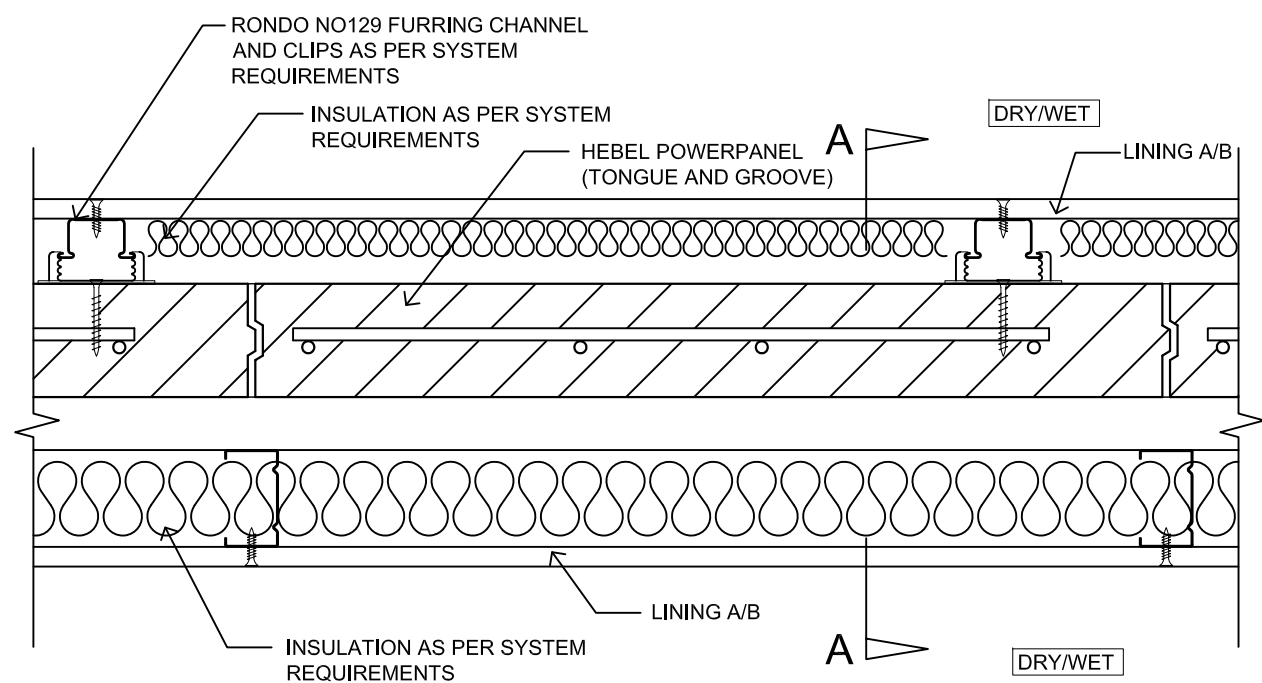


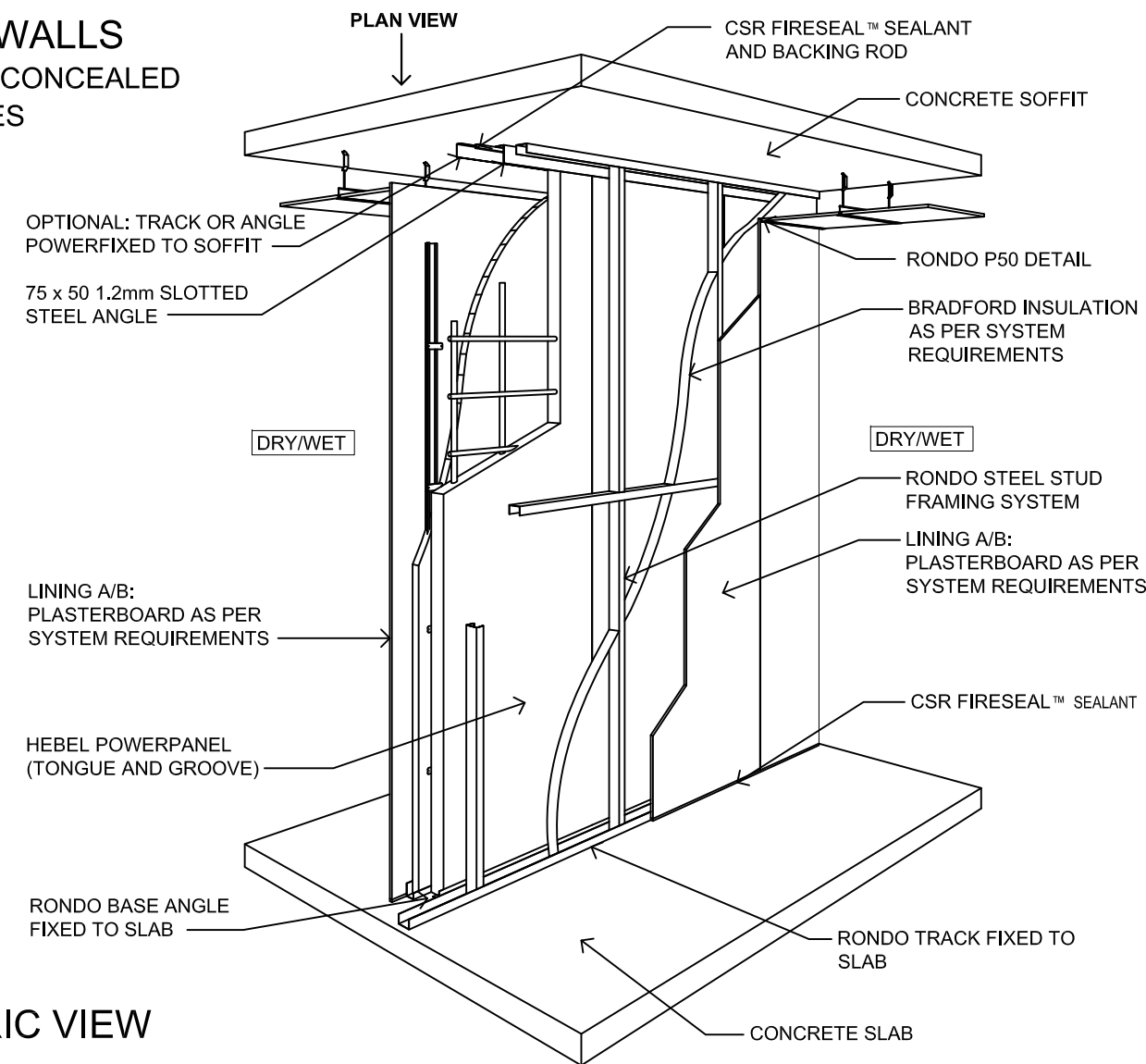
HEBEL INTERTENANCY WALLS
FOR MAXIMUM FLOOR SPACE WITH CONCEALED
SERVICES ON BOTH SIDES
HEB 1074 - 1075 - 1076



VERTICAL CROSS SECTION DETAIL A-A



DETAIL PLAN VIEW



ISOMETRIC VIEW
NTS

INTERTENANCY WALL										
CODE	APPLICATION	WALL THICKNESS	WALL HEIGHT 'H'	FRL ^(B)	R _w +C _{tr} ^(C)	SYSTEM COMPONENT VARIATIONS				
						LINING A	INSULATION ^(A)	MIN. GAP	INSULATION ^(B)	LINING B
HEB1074	DRY TO DRY	243mm	UP TO 3.3m HIGH	-/90/90 FOR WALL HEIGHTS UP TO 3.3m	50dB	13mm GYPROCK CD	50mm GLASSWOOL (11kg/m ³) OR 50mm POLYESTER (14kg/m ³)	35mm	75mm GLASSWOOL (11kg/m ³) OR 75mm POLYESTER (14kg/m ³)	13mm GYPROCK CD
HEB1075	DRY TO WET	228mm	UP TO 3.3m HIGH	-/90/90 FOR WALL HEIGHTS UP TO 3.3m	50dB	DRY SIDE - 13mm GYPROCK CD	50mm GLASSWOOL (11kg/m ³) OR 50mm POLYESTER (14kg/m ³)	20mm	75mm GLASSWOOL (11kg/m ³) OR 75mm POLYESTER (14kg/m ³)	WET SIDE - 13mm AQUACHEK
HEB1076	WET TO WET	228mm	UP TO 3.3m HIGH	-/90/90 FOR WALL HEIGHTS UP TO 3.3m	50dB	13mm AQUACHEK	50mm GLASSWOOL (11kg/m ³) OR 50mm POLYESTER (14kg/m ³)	20mm	75mm GLASSWOOL (11kg/m ³) OR 75mm POLYESTER (14kg/m ³)	13mm AQUACHEK

REFER TO DESIGN AND INSTALLATION GUIDES FOR HIGH RISE INTERTENANCY AND SERVICE WALLS (HEB 1354) FOR MORE CONSTRUCTION AND PRODUCT INFORMATION. 13mm AQUACHEK CAN BE REPLACED BY 9mm FIBRE CEMENT SHEETING AND ACHIEVE THE SAME FRL AND ACOUSTICS.
FOR WALLS > 3.3m AND ≤ 4.65m, POWERPANEL SP CAN BE USED AND WILL ACHIEVE A FRL OF -/120/120. REFER TO DESIGN AND INSTALLATION GUIDES FOR SHAFT AND SCISSOR STAIR WALLS (HEBIT 032) FOR MORE DETAILED INFORMATION.

 CSR BUILDING PRODUCTS LTD Head Office: T1111 3, 39 DELHI RD, NORTH RYDE NSW 2113 LOCKED BAG 1345, NORTH RYDE BC NSW 1670 A.B.N. 55 008 631 356 Ph: 1300 369 448 www.hebelaustralia.com.au	 hebel The better way to build CSR Building Products Limited A.B.N. 55 008 631 356	SYSTEM CODE HEB1074 - HEB1076		TITLE HEBEL CORRIDOR WALLS			
		DESIGN GUIDE REFERENCE ---	SCALE 1:5 @ A3	SHEET SIZE A3	DRAWN DG	CHECK CW	DATE 22.04.15 REVISION B