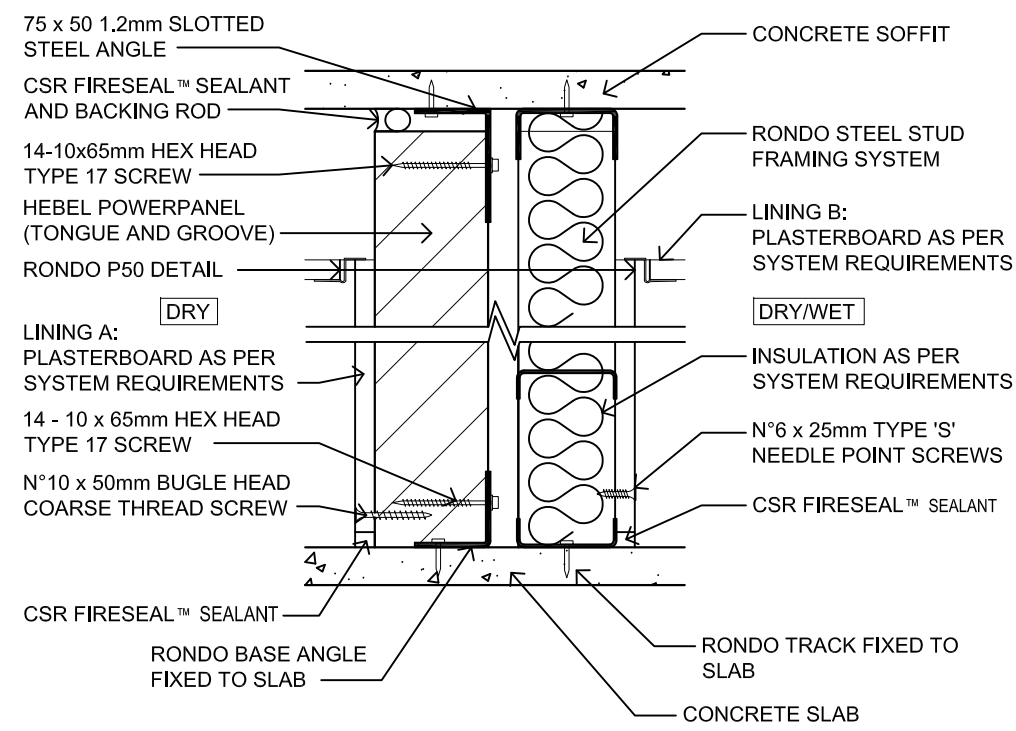
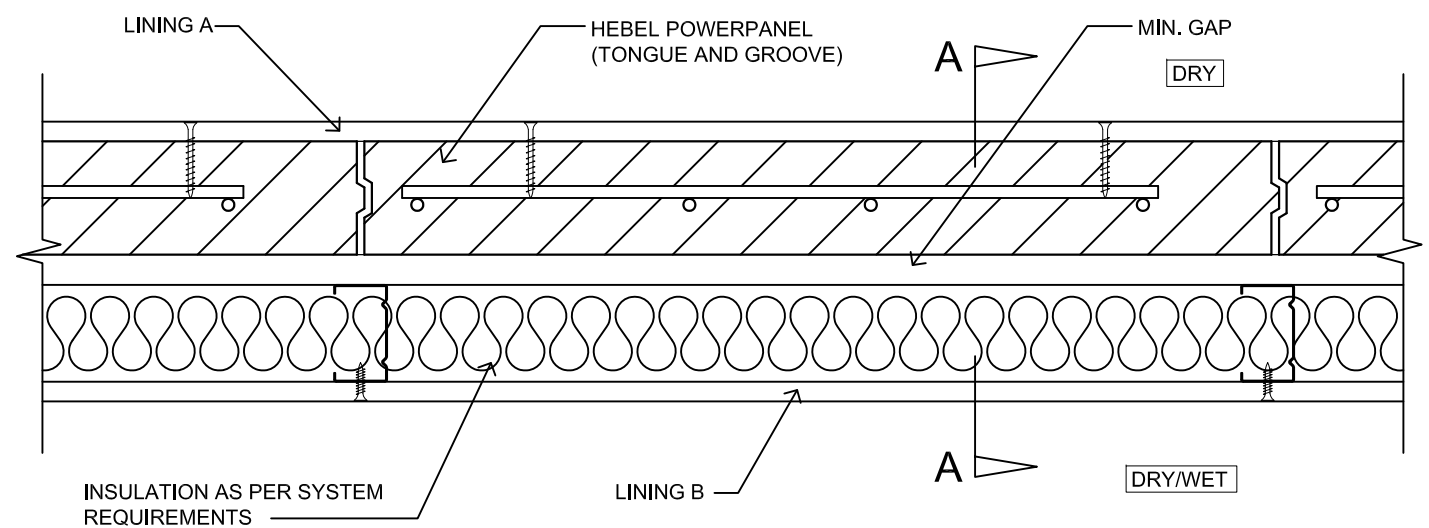


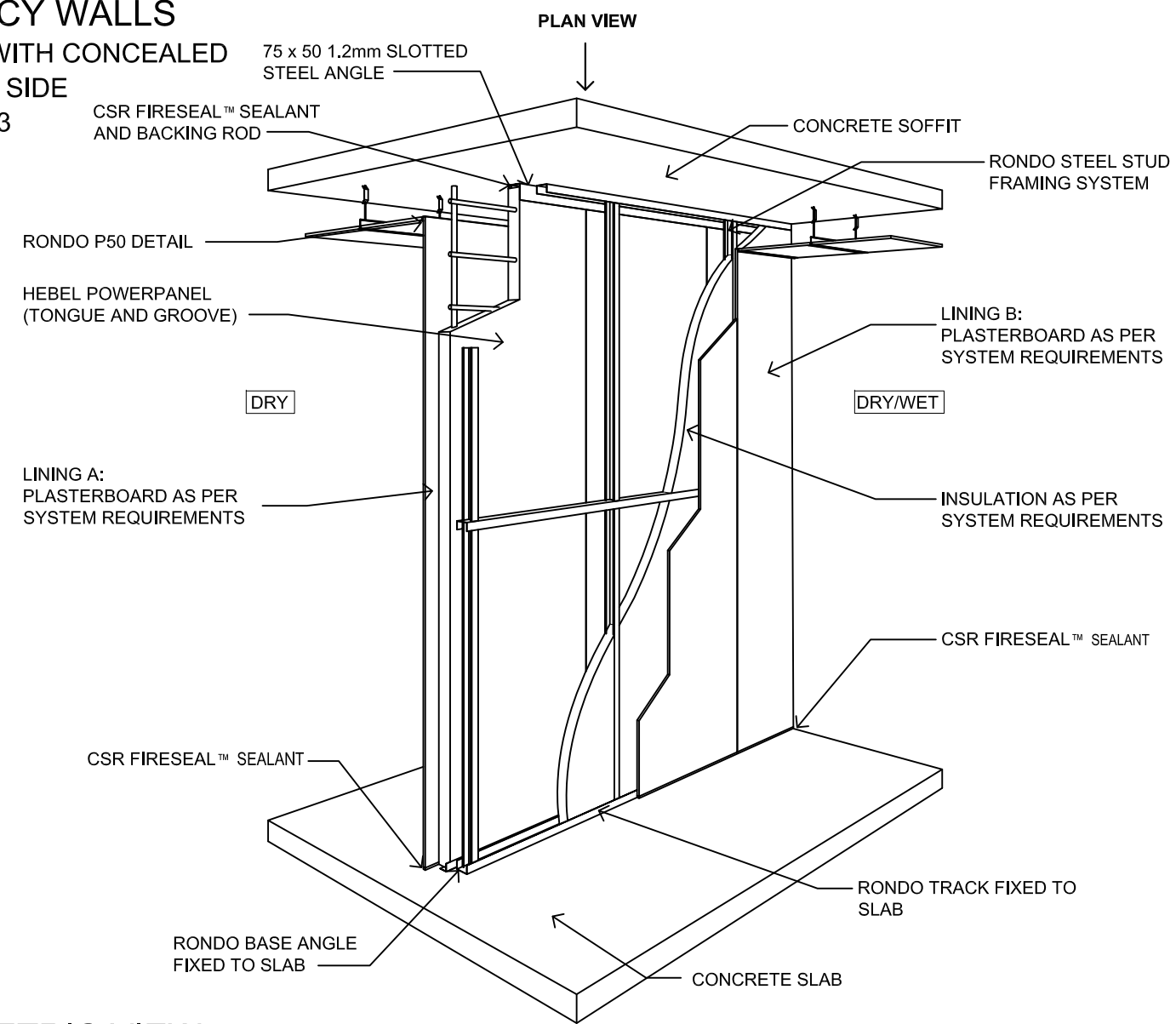
HEBEL INTERTENANCY WALLS
FOR MAXIMUM FLOOR SPACE WITH CONCEALED
SERVICES ON ONE SIDE
HEB 1072 - 1073



VERTICAL CROSS SECTION DETAIL A-A



DETAIL PLAN VIEW



ISOMETRIC VIEW
NTS

INTERTENANCY WALL									
CODE	APPLICATION	WALL THICKNESS	WALL HEIGHT 'H'	FRL (B)	R _w +C _{tr} (C)	SYSTEM COMPONENT VARIATIONS			
						LINING A	MIN. GAP	INSULATION (A)	LINING B
HEB1072	DRY TO DRY	185mm	UP TO 3.3m HIGH	-/90/90 FOR WALL HEIGHTS UP TO 3.3m	50dB	13mm GYPROCK CD	20mm	75mm GLASSWOOL (11kg/m³) OR 75mm POLYESTER (14kg/m³)	13mm GYPROCK CD
HEB1073	DRY TO WET	185mm	UP TO 3.3m HIGH	-/90/90 FOR WALL HEIGHTS UP TO 3.3m	50dB	13mm GYPROCK CD	20mm	50mm GLASSWOOL (11kg/m³) OR 50mm POLYESTER (14kg/m³)	13mm AQUACHEK

REFER TO DESIGN AND INSTALLATION GUIDES FOR HIGH RISE INTERTENANCY AND SERVICE WALLS (HEB 1354) FOR MORE CONSTRUCTION AND PRODUCT INFORMATION. 13mm AQUACHEK CAN BE REPLACED BY 9mm FIBRE CEMENT SHEETING AND ACHIEVE THE SAME FRL AND ACOUSTICS.
FOR WALLS > 3.3m AND ≤ 4.65m, POWERPANEL SP CAN BE USED AND WILL ACHIEVE A FRL OF -/120/120. REFER TO DESIGN AND INSTALLATION GUIDES FOR SHAFT AND SCISSOR STAIR WALLS (HEBIT 032) FOR MORE DETAILED INFORMATION.



CSR BUILDING PRODUCTS LTD
Head Office: T1111 3, 39 DELHI RD, NORTH RYDE NSW 2113
LOCKED BAG 1345, NORTH RYDE BC NSW 1670
A.B.N. 55 008 631 356 P13 1300 369 448
www.hebelaustralia.com.au



SYSTEM CODE		TITLE			
HEB1072 - HEB1073		HEBEL CORRIDOR WALLS			
DESIGN GUIDE REFERENCE	SCALE	SHEET SIZE	DRAWN	DATE	
		A3	DG	22.04.15	
DESIGN GUIDE REFERENCE	SCALE	SHEET NO.	CHECK	REVISION	
		1 of 1	CW	B	