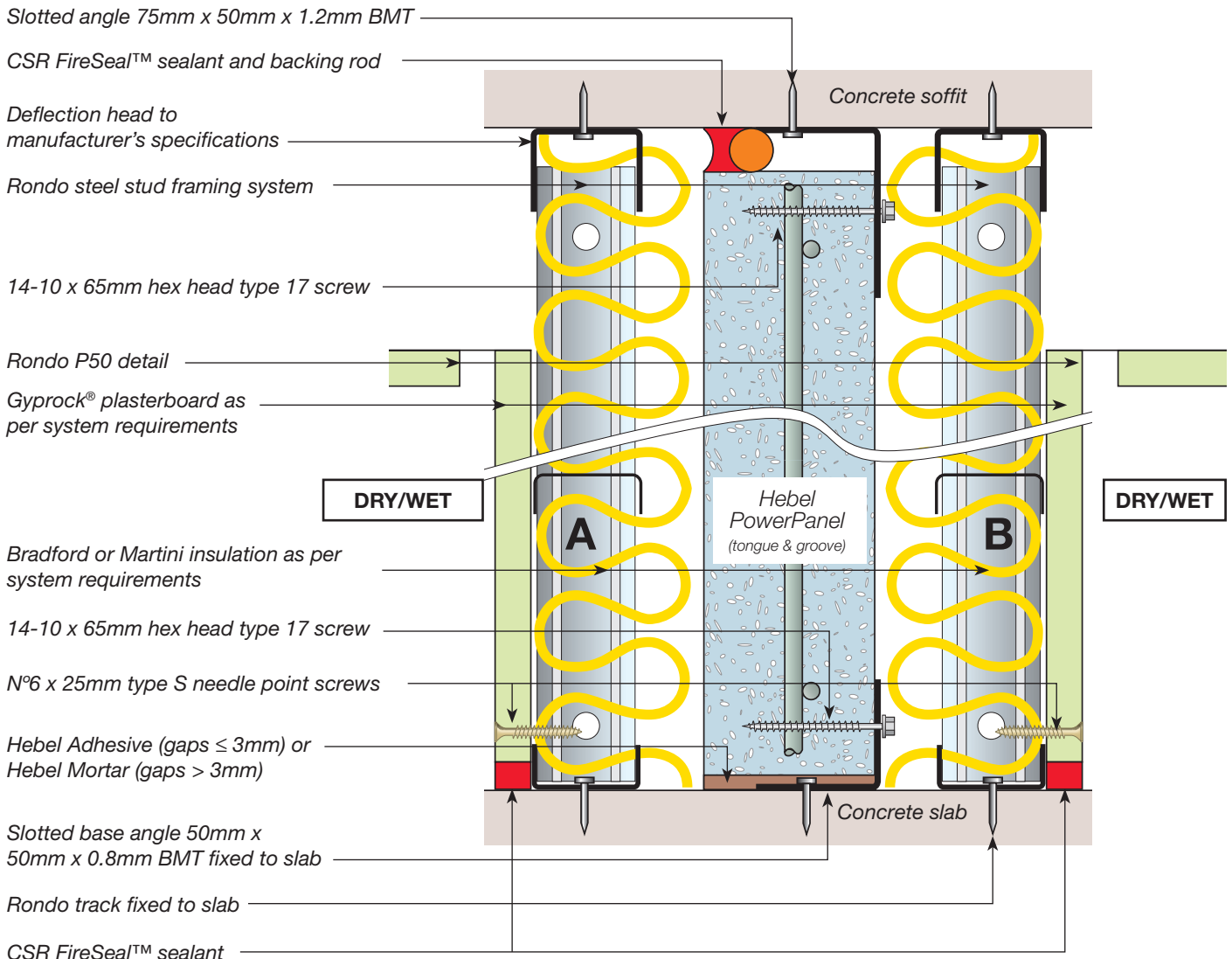




INTERTENANCY WALL

large concealed water services both sides



System	Application	FRL ^(A)	Wall linings ^(D)	Insulation A	Cavity width (mm)	Insulation B	Acoustic rating Rw+Ctr ^(C)	Wall width (mm)
HEB 1077	Dry to Dry	-/90/90 for wall heights up to 3.3m	Both Sides 13mm Gyprock CD	50mm Bradford Acoustigard	20	75mm Bradford Acoustigard	53	269
HEB 1078	Dry to Wet		Dry Side – 13mm Gyprock CD Wet Side – 13mm Aquacheck ^(B)	11 or 50mm Martini Prime		11 or 75mm Martini Prime	53	269
HEB 1079	Wet to Wet		Both Sides 13mm Aquacheck ^(B)				54	269

NOTES:

- (A) For wall heights higher than 3.3m, caged tongue & groove PowerPanel can be used and will achieve a FRL of -/120/120 for wall heights up to 4.65m (vertically). Also see Construction details section.
- (B) 13mm Aquacheck can be replaced by 9mm FC Sheeting and achieve the same Acoustic & Fire Rating Levels.
- (C) Rw+Ctr values are based on acoustic opinion 20140366.9/1606A/R8/GW provided by Acoustic Logic Consultancy Pty Ltd.
- (D) The minimum mass of plasterboard must be 8.5kg/m².

GENERAL NOTES:

- 1. Intertency wall systems HEB 1072-1073 meet NCC 2016 deemed-to-satisfy discontinuous construction requirements.
- 2. HEB 1077-1079 are designed to resist a maximum ultimate lateral pressure of 0.50kPa. Contact Hebel Technical Services if lateral pressures exceed 0.50kPa.



For more information or to speak to a Hebel representative call:

1300 369 448 or www.hebel.com.au

