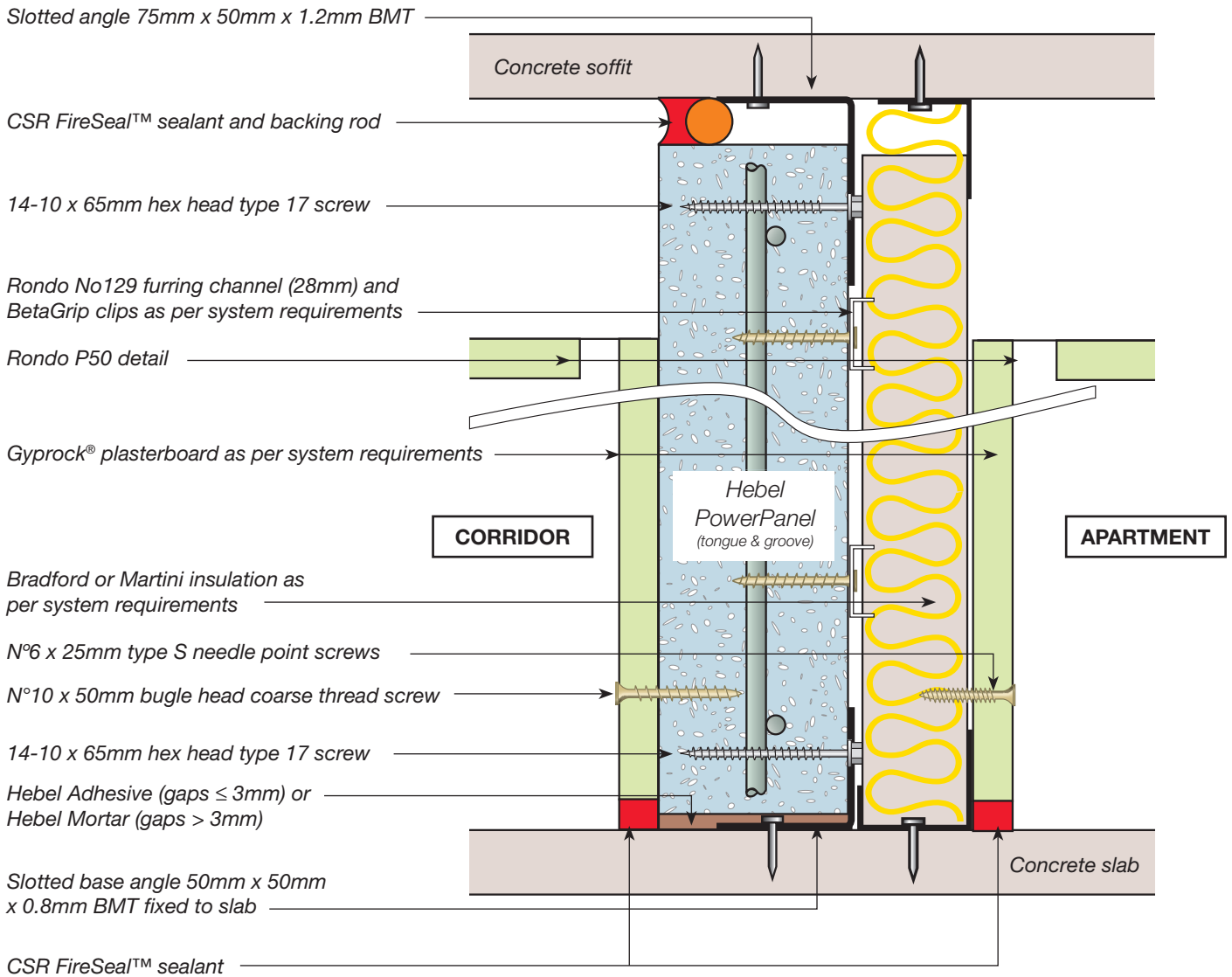




# CORRIDOR WALL

concealed water services one side with furring channel



System	Application	FRL (A)	Wall linings (D)	Cavity width (mm)	Insulation	Acoustic rating Rw(C)	Wall width (mm)
HEB 1170	Dry to Dry	-/90/90 for wall heights up to 3.3m	Both Sides 13mm Gyprock CD	43	50mm Bradford Acoustigard 11 or 50mm Martini Prime	52	144
HEB 1171	Dry to Wet		Corridor Side – 13mm Gyprock CD Stud Side – 13mm Aquacheck (B)			53	144

**NOTES:**

- (A) For wall heights higher than 3.3m, caged tongue & groove PowerPanel can be used and will achieve a FRL of -/120/120 for wall heights up to 4.65m (vertically). Also see Construction details section.
- (B) 13mm Aquacheck can be replaced by 9mm FC Sheeting and achieve the same Acoustic & Fire Rating Levels.
- (C) Rw values are based on acoustic opinion 20140366.9/1606A/R8/GW provided by Acoustic Logic Consultancy Pty Ltd.
- (D) The minimum mass of plasterboard must be 8.5kg/m<sup>2</sup>.

**GENERAL NOTES:**

1. HEB 1170-1171 are designed to resist a maximum ultimate lateral pressure of 0.50kPa. Contact Hebel Technical Services if lateral pressures exceed 0.50kPa.



For more information or to speak to a Hebel representative call:

**1300 369 448** or [www.hebel.com.au](http://www.hebel.com.au)

